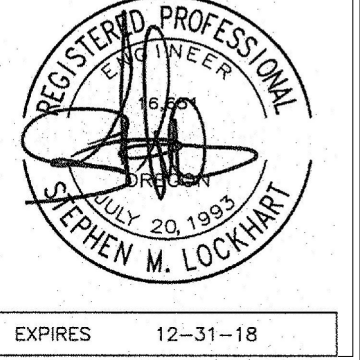




PORTLAND PUBLIC SCHOOLS
501 N Dixon Street
Portland, OR 97227
(503) 916-3401

MKE
MKE & ASSOCIATES, INC.
CONSULTING ENGINEERS
MECHANICAL AND ELECTRICAL SYSTEMS
6915 SW MACADAM AVE.
SUITE 200
PORTLAND, OREGON 97219
PHONE: 503.892.1188
FAX: 503.892.1190
CONTACT...HANK BARLEEN
engineering@mke-inc.com

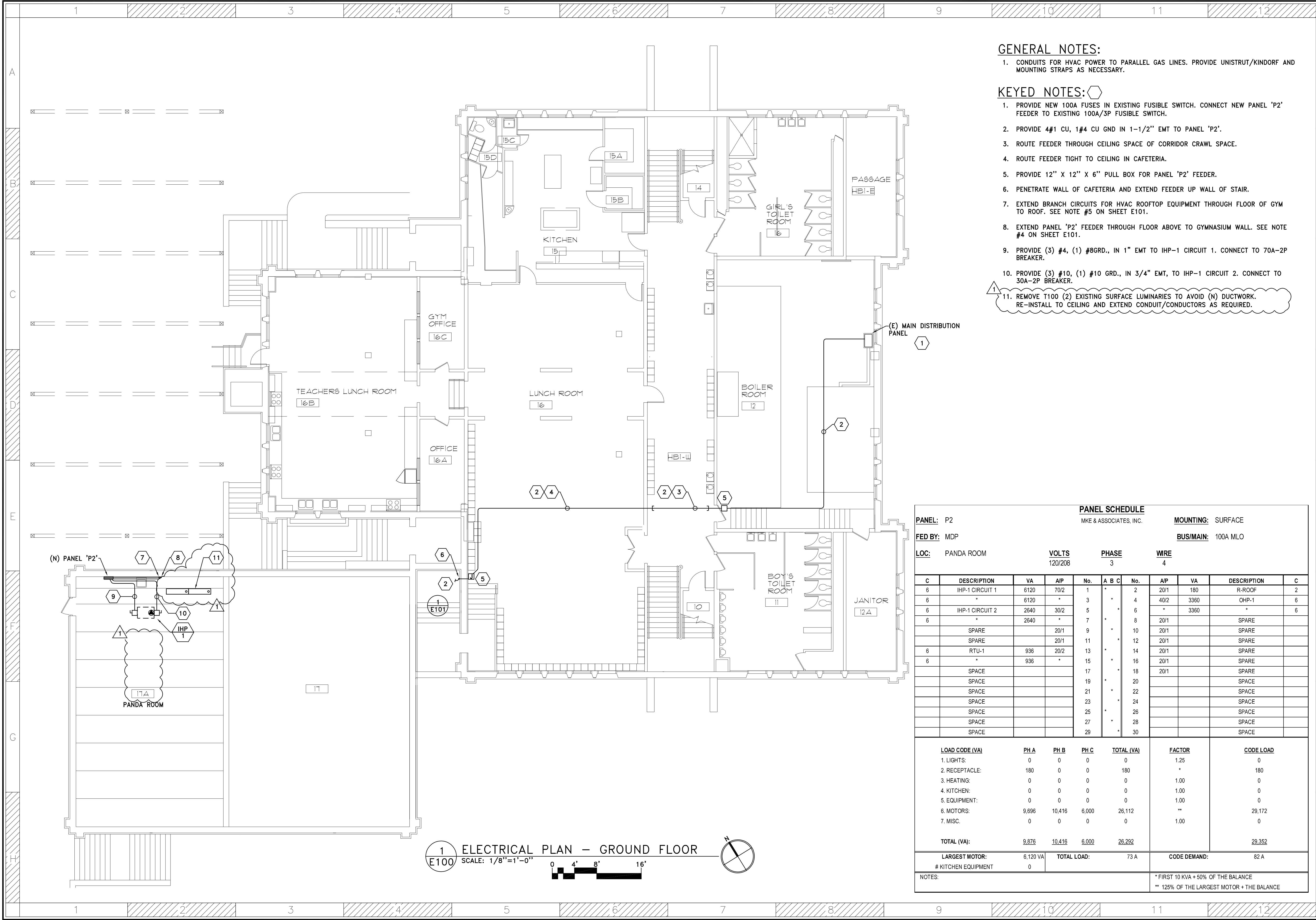


GENERAL NOTES:

- CONDUITS FOR HVAC POWER TO PARALLEL GAS LINES. PROVIDE UNISTRUT/KINDORF AND MOUNTING STRAPS AS NECESSARY.

KEYED NOTES:

- PROVIDE NEW 100A FUSES IN EXISTING FUSIBLE SWITCH. CONNECT NEW PANEL 'P2' FEEDER TO EXISTING 100A/3P FUSIBLE SWITCH.
- PROVIDE 4#1 CU, 1#4 CU GND IN 1-1/2" EMT TO PANEL 'P2'.
- ROUTE FEEDER THROUGH CEILING SPACE OF CORRIDOR CRAWL SPACE.
- ROUTE FEEDER TIGHT TO CEILING IN CAFETERIA.
- PROVIDE 12" X 12" X 6" PULL BOX FOR PANEL 'P2' FEEDER.
- PENETRATE WALL OF CAFETERIA AND EXTEND FEEDER UP WALL OF STAIR.
- EXTEND BRANCH CIRCUITS FOR HVAC ROOFTOP EQUIPMENT THROUGH FLOOR OF GYM TO ROOF. SEE NOTE #5 ON SHEET E101.
- EXTEND PANEL 'P2' FEEDER THROUGH FLOOR ABOVE TO GYMNASIUM WALL. SEE NOTE #4 ON SHEET E101.
- PROVIDE (3) #4, (1) #8GRD., IN 1" EMT TO IHP-1 CIRCUIT 1. CONNECT TO 70A-2P BREAKER.
- PROVIDE (3) #10, (1) #10 GRD., IN 3/4" EMT, TO IHP-1 CIRCUIT 2. CONNECT TO 30A-2P BREAKER.
- REMOVE T100 (2) EXISTING SURFACE LUMINARIES TO AVOID (N) DUCTWORK. RE-INSTALL TO CEILING AND EXTEND CONDUIT/CONDUCTORS AS REQUIRED.



PANEL SCHEDULE												
PANEL: P2				MKE & ASSOCIATES, INC.				MOUNTING: SURFACE				
FED BY: MDP								BUS/MAIN: 100A MLO				
LOC: PANDA ROOM		VOLTS: 120/208		PHASE: 3		WIRE: 4						
C	DESCRIPTION	VA	A/P	No.	A	B	C	No.	A/P	VA	DESCRIPTION	C
6	IHP-1 CIRCUIT 1	6120	70/2	1				2	20/1	180	R-ROOF	2
6		6120	*	3	*	*	*	4	40/2	3360	OHP-1	6
6	IHP-1 CIRCUIT 2	2640	30/2	5				6	*	3360	*	6
6		2640	*	7	*	*	*	8	20/1		SPARE	
	SPARE		20/1	9	*	*	*	10	20/1		SPARE	
	SPARE		20/1	11	*	*	*	12	20/1		SPARE	
6	RTU-1	936	20/2	13	*	*	*	14	20/1		SPARE	
6		936	*	15	*	*	*	16	20/1		SPARE	
	SPACE			17	*	*	*	18	20/1		SPARE	
	SPACE			19	*	*	*	20			SPACE	
	SPACE			21	*	*	*	22			SPACE	
	SPACE			23	*	*	*	24			SPACE	
	SPACE			25	*	*	*	26			SPACE	
	SPACE			27	*	*	*	28			SPACE	
	SPACE			29	*	*	*	30			SPACE	
LOAD CODE (VA)		PH A	PH B	PH C	TOTAL (VA)			FACTOR	CODE LOAD			
1. LIGHTS:		0	0	0	0			1.25	0			
2. RECEPTACLE:		180	0	0	180			*	180			
3. HEATING:		0	0	0	0			1.00	0			
4. KITCHEN:		0	0	0	0			1.00	0			
5. EQUIPMENT:		0	0	0	0			1.00	0			
6. MOTORS:		9,696	10,416	6,000	26,112			**	29,172			
7. MISC.		0	0	0	0			1.00	0			
TOTAL (VA):		9,876	10,416	6,000	26,292				29,352			
LARGEST MOTOR:		6,120 VA		TOTAL LOAD:		73 A		CODE DEMAND:				
# KITCHEN EQUIPMENT		0						82 A				
NOTES:												
								* FIRST 10 KVA + 50% OF THE BALANCE				
								** 125% OF THE LARGEST MOTOR + THE BALANCE				

1 ELECTRICAL PLAN - GROUND FLOOR
E100 SCALE: 1/8"=1'-0"
0 4' 8' 16'

PLOTTED: DANIEL DERHEIMER 10/22/2018 9:54 AM X:\DWG\PS\5046\5046E100

GYM HVAC REPLACEMENT & FOOTING REPAIRS
AINSWORTH ELEMENTARY SCHOOL
PORTLAND PUBLIC SCHOOLS
2425 SW VISTA AVE, PORTLAND, OR 97201

DRAWN: JR
REVIEWED: HB
REVISED: 10/23/2018 Addendum
DATE: 09/28/2018
FILE: 5046E100.DWG
JOB NUMBER: PS-5046
SHEET TITLE: ELECTRICAL PLAN GROUND FLOOR
SHEET NUMBER: E100
2 OF 3